

# LAB 25: SCALP, CRANIAL CAVITY, AND MENINGES

## 11/29/2022

### — Goals

- 1 Identify the layers of the SCALP.
- 2 Examine the dura mater and the dural septae.
- 3 Remove the brain and study: meningeal coverings, gross features, and arterial supply (circle of Willis).
- 4 Examine the internal aspect of the base of the skull and the cranial fossae.
- 5 Identify cranial nerves and blood vessels that exit/enter the skull through foramina in the cranial base.
- 6 Identify the dural venous sinuses.
- 7 Open the cavernous sinuses and examine the structures that pass through the sinuses, or are located in their walls.

### **SCALP**

The **scalp** has been cut into 4 flaps and reflected downward. The skull cap (**calvaria**) has been cut with a bone saw—extending uniformly around the head above the **margin of the orbits** anteriorly and above the **external occipital protuberance** posteriorly.

## Layers of the Scalp

The 3 external-most layers of the scalp are the “scalp proper”. Study the flaps in cross-section to identify the layers:

- **Skin**
- **Connective tissue**—contains fatty tissue and a lot of dense connective tissue with cutaneous vessels and nerves
- **Aponeurosis (epicranial aponeurosis)**, a flat tendon that connects anteriorly and posteriorly to skeletal muscles (the *occipitofrontalis*—*frontal belly and occipital belly attach on either end of the aponeurosis*)
- **Loose areolar connective tissue**—allows the scalp proper to glide over the skull when it is moved by the occipitofrontalis. The looseness of this layer makes it a “potential space” where fluids can accumulate should the scalp be injured or infected.
- **Periosteum**—scrape the external surface of the skull. This is the periosteum firmly attached to the connective tissue in the skull sutures.

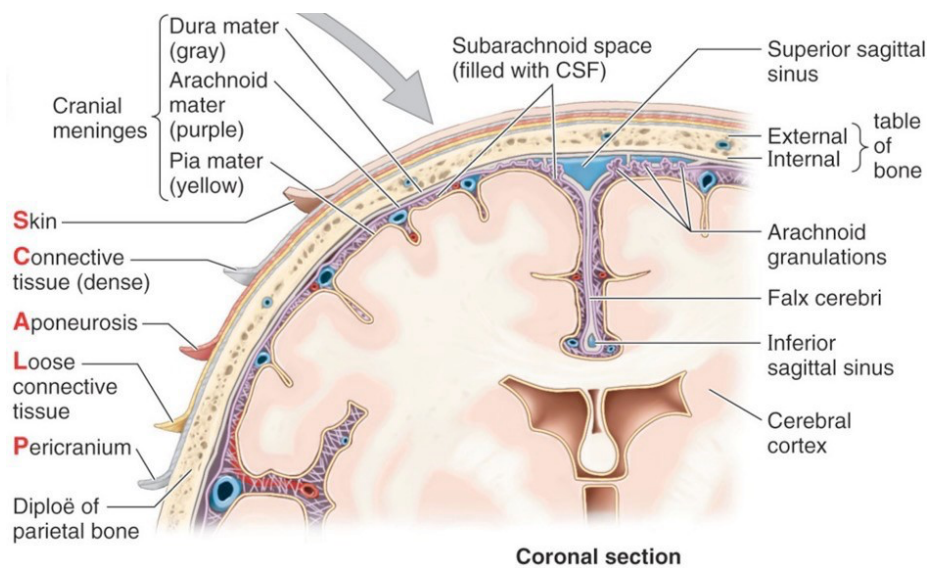


Figure 25.1.

## Nerves and Arteries of the Scalp

Draw an imaginary line between the two ears passing through the **vertex**/summit of the skull.

The anterior scalp is innervated by branches of the **trigeminal nerve** (CN V), while the posterior scalp is supplied by **cervical spinal nerves**.

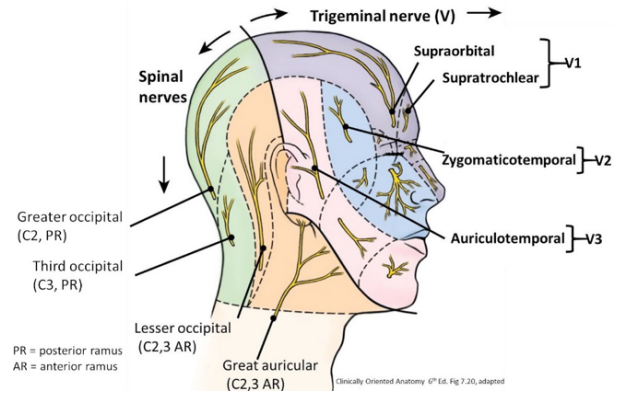
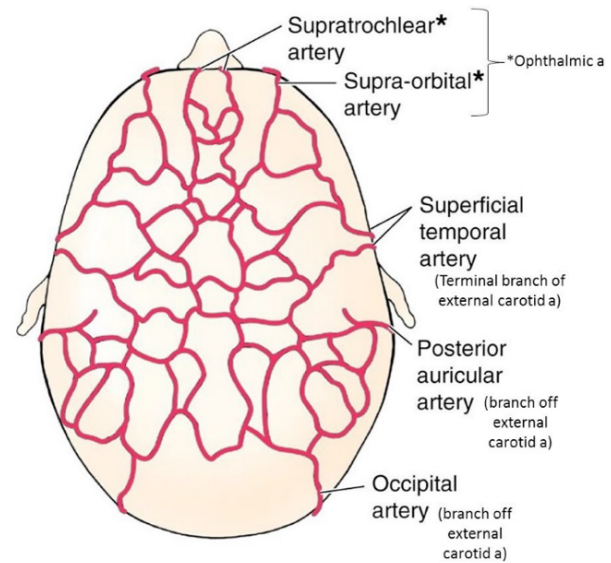


Figure 25.2.

The anterior-most scalp receives blood from branches of the **ophthalmic artery**, while the rest of the scalp is supplied by branches of the **external carotid artery**.



(A) Superior view

Copyright © 2010 Wolters Kluwer Health | Lippincott Williams & Wilkins

Clinically Oriented Anatomy 6<sup>th</sup> Ed. Fig 7.22, 7.24, adapted

Figure 25.3.

## CRANIAL CAVITY AND BRAIN



### REMOVE THE CALVARIA.

In order to loosen the calvaria, you may need to insert a chisel and tap it gently with a hammer or use the skull cap removal tool (wide handle with a short chisel-like part). Insert the chisel part into the saw cut and twist it. Do this in several locations around the circumference of the head.



Figure 25.4.



## DO YOUR BEST TO PEEL AWAY BOTH LAYERS OF DURA FROM THE BONE AS THE CALVARIA IS REMOVED.

The **dura mater** has an outer **endosteal layer** (the internal layer of periosteum of the skull cap) and an inner **meningeal layer** (the dura mater proper).

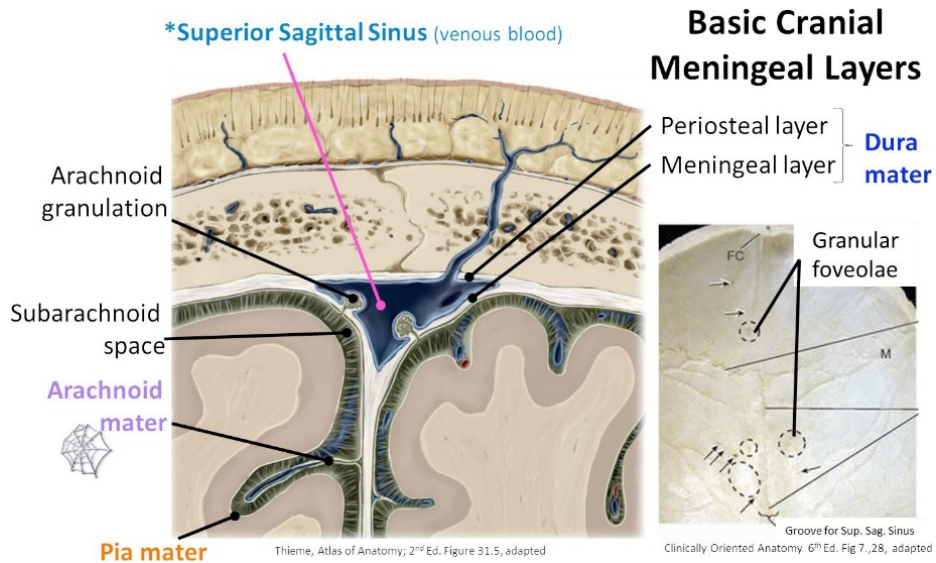


Figure 25.5.

The endosteal and meningeal layers of dura are fused except in certain places where they are separated to form **venous sinuses** (e.g., superior sagittal sinus) and where the meningeal layer departs to form **dural septa** (e.g., falx cerebri).

Ideally, once the calvaria is removed, the dura will be intact, forming a round cap over the brain.

This will NOT be the case in most cadavers since the cap is easily severed with an autopsy saw and may come off with the calvaria.

If the dural cap comes off with the calvaria—turn the skullcap over and strip the dura away.

Examine the internal surface of the calvaria.

- Observe the midline impression in the bone made by the **superior sagittal sinus**.
- Find scattered pits in the bone = these are impressions in the bone made by large **arachnoid granulations**.

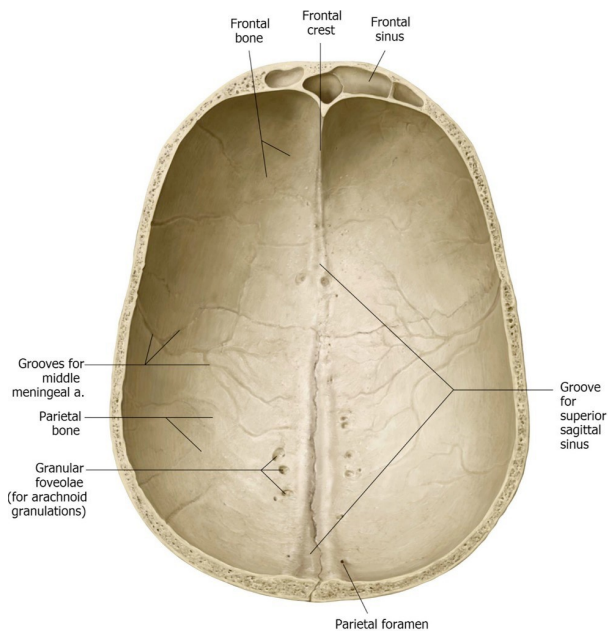


Figure 25.6.



What are arachnoid granulations, and what is their function?

- Look at the cut surface of the calvaria and notice its construction: an **outer table of compact bone**, an **inner table of compact bone**, and **spongy bone** (called **diploe**) in the middle.

## Intact Dural Cap



If you were able to save the entire dural cap over the brain = KUDOS!

Tethered to the outside of the dura is the **middle meningeal artery** (it is sandwiched between the dura and skull bones). The middle meningeal is a branch of the **maxillary artery** (from **the external carotid artery**). It is the chief source of blood to the calvaria and its associated dura.



## IF YOU HAVE AN INTACT DURA MATER, OPEN THE DURAL CAP BY MAKING FOUR TRIANGULAR FLAPS:

- 1 With scissors, make two longitudinal cuts just lateral and parallel to the superior sagittal sinus, from posterior to anterior, leaving the superior sagittal sinus in the strip of dura in the midline of the head.
- 2 Make left and right coronal incisions in the dura starting at midpoints of the incisions you just made and extending down to the cut edge of the skull above the ears.
  - Fold the four flaps toward the cut edge of the skull. This will leave the **falx cerebri** exposed with the superior sagittal sinus in its outer convex border.

### Cuts to make 4 flaps

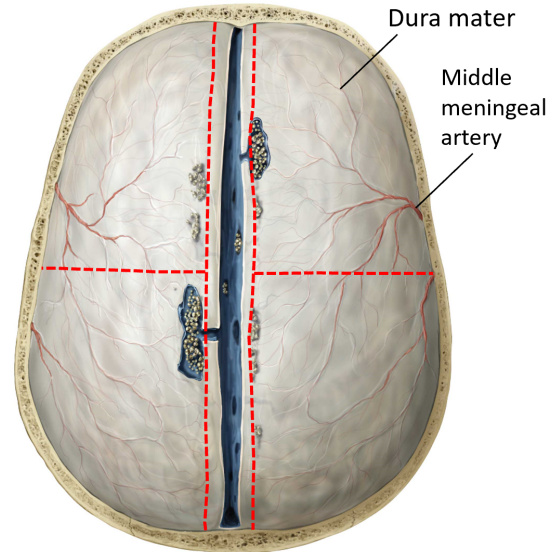


Figure 25.7.

*Meningeal layer of dura forms*  
**Dural Septae** (partitions)

Within septae, b/n the two layers of dura are  
**Dural Venous Sinuses**

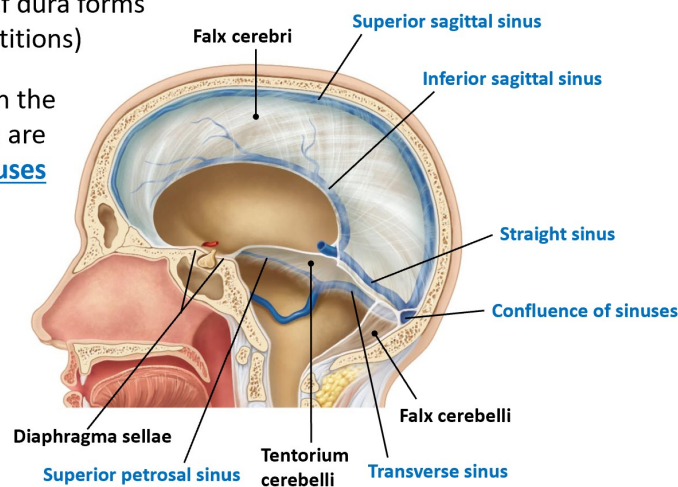


Figure 25.8.

Examine the **dural septa** (= infoldings of the meningeal layer of the dura). See Figure 25.8.

- **Falx cerebri**
  - Contains the superior sagittal sinus and is located within the **longitudinal fissure** of the cerebrum, separating the **left** and **right cerebral hemispheres**. Its inferior free margin contains the **inferior sagittal sinus** and relates to the brain's **corpus callosum**.
- **Tentorium cerebelli**
  - Elevate the brain's temporal lobes to see the **tentorium cerebelli**.
  - It attaches to the **anterior** and **posterior clinoid processes** of the sphenoid bone, the summit of the **petrous temporal bones**, and to the **internal surface of the occipital bone**.
  - The attached edges of the tentorium contain the **superior petrosal** and **transverse venous sinuses**.
  - The left and right portions of the tentorium meet in the midline where it contains the **straight venous sinus** and where it is attached to the falx cerebri. The midline part of the tentorium is higher than the peripherally attached portions (a sloped tent).
  - The tentorium has a gap anteromedially called the **tentorial notch** that contains the brainstem. *The tentorium separates the occipital lobes of the brain from the cerebellum.*
- **Falx cerebelli**
  - Lies inferior to the tentorium. It attaches to the midline of the occipital bone and to the inferior surface of the tentorium and it separates the left and right cerebellar hemispheres.



**REMOVE THE ENTIRE BRAIN.**

Standing at the head end of the cadaver, reach around the frontal lobes of the brain and use your fingers to gently lift them from the **anterior cranial fossa**.

- As you lift, cut the attachment of the **falx cerebri** from the **crista galli** of the ethmoid.
- Pull the falx cerebri posteriorly—removing it from its location between the cerebral hemispheres (it is still attached posteriorly to the tentorium cerebelli).
- Lift the right temporal lobe to expose the **tentorium cerebelli**. Cut the tentorium, from anterior to posterior, where it attaches to the **clinoid processes**, **petrous ridge of the temporal bone**, and to the **internal surface of the occipital bone**. See the dashed line in Figure 25.9.
- **Repeat on the left side.**

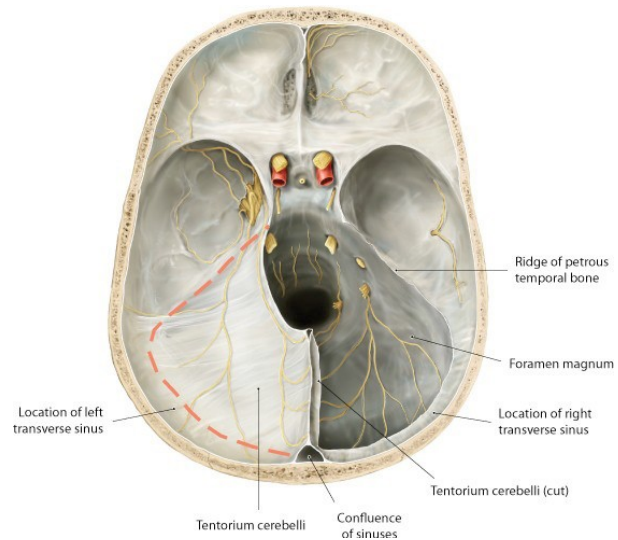


Figure 25.9. Adapted from Gilroy et al. Atlas of Anatomy, 2nd ed., Fig. 31.15.

The brain is now “free”. Now what remains is to cut the cranial nerves, cerebral blood vessels, and spinal cord.



**PROCEED FROM ANTERIOR TO POSTERIOR; HAVE ONE MEMBER ELEVATE THE BRAIN WHILE ANOTHER CUTS.**

- Elevate the frontal lobes, carefully peel away the **olfactory bulbs** and **tracts** from the skull base while keeping them attached to the brain.
- Cut the **optic nerves** and **internal carotid arteries** as they emerge from the skull base.
- Cut **cranial nerves III through XII** as close to the skull as possible on both sides (as your teammate lifts and tilts the brain).

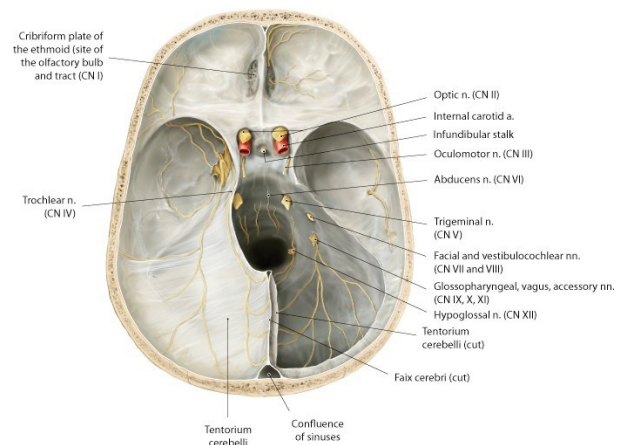


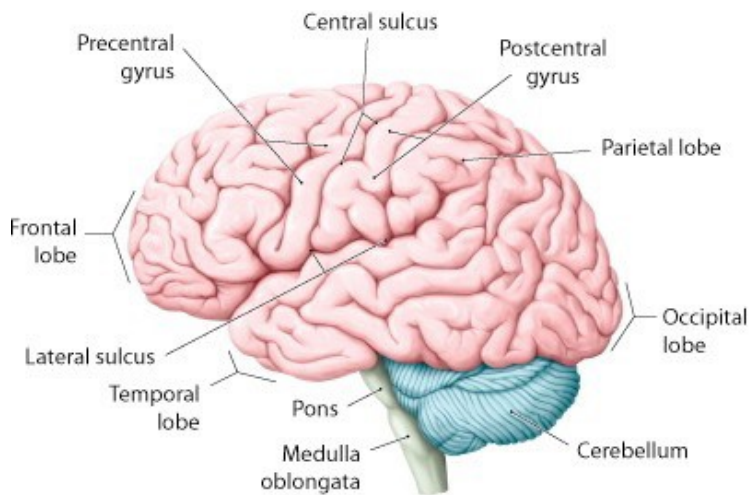
Figure 25.10. Adapted from Gilroy et al., Atlas of Anatomy, 2nd ed., Fig. 34.5.

! Before removing, check that the tentorium cerebelli is cut!

- Finally, elevate the brain and with a long knife, sever the **spinal cord** and **vertebral arteries** as far down into the **foramen magnum** as possible. Remember that you are using these brains for your neuro course! Ask an instructor for help if you are unsure of the procedure.
- Carefully remove the brain from the cadaver and place it onto a tray.
- Review the anatomy of the **dural septa** that remain in the cranial cavity = **falx cerebri, falx cerebelli, and tentorium cerebelli**.

Identify the following parts or structures on the brain:

- the lobes of the cerebrum: **frontal, parietal, temporal, and occipital**
- the **cerebellum**
- the parts of the brainstem: **midbrain, pons, and medulla oblongata**



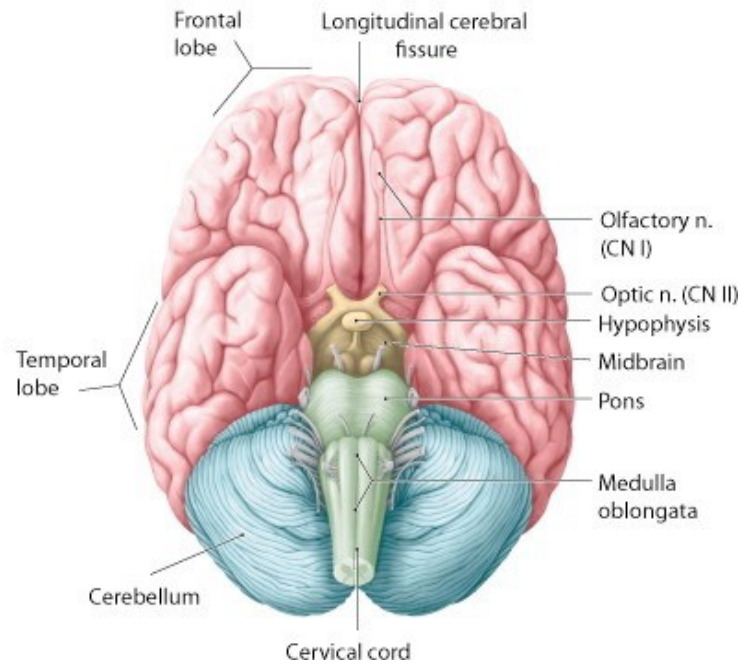


Figure 25.11. Adapted from Gilroy et al., Atlas of Anatomy, 2nd ed., Figs. 40.6A, 40.6C.

Study the remaining meninges covering the brain (there are now 2).

The **arachnoid mater** is the outermost shiny layer. It spans across the **sulci** (invaginations) of the cerebral cortex.

Peel away some of the arachnoid mater to expose the underlying **pia mater**. This is the most intimate layer of the meninges. It adheres snugly to the cerebrum and follows its contours over the **gyri** (contours) and down into the **sulci**.



Examine the meninges on top of the brain along the edges of the **longitudinal fissure**. Are there any white arachnoid granulations?

Identify the following arteries on the inferior surface of the brain:

- **Vertebral artery**
- **Basilar artery**
- Components of the **cerebral arterial circle (of Willis)**
  - **posterior cerebral artery**
  - **posterior communicating artery**
  - **internal carotid artery**
  - **anterior cerebral artery**
  - **anterior communicating artery**

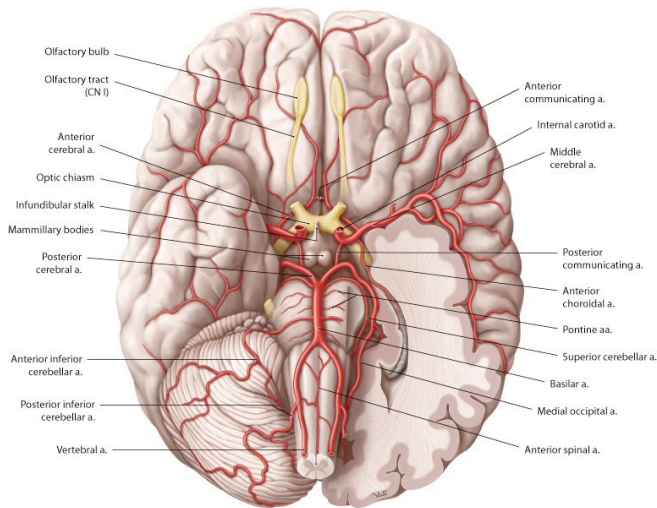


Figure 25.12. Adapted from Gilroy et al., Atlas of Anatomy, 2nd ed., fig. 41.6.

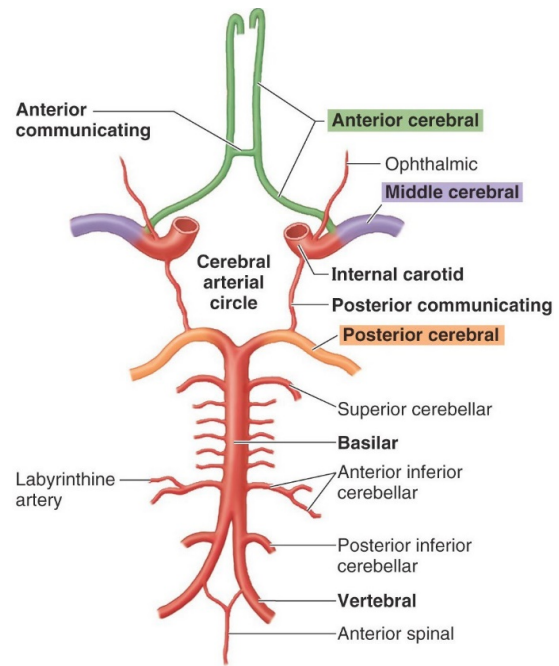


Figure 25.13. Clinically Oriented Anatomy, Figure 7.43.

Try to identify a few of the cranial nerves attached to the brainstem.

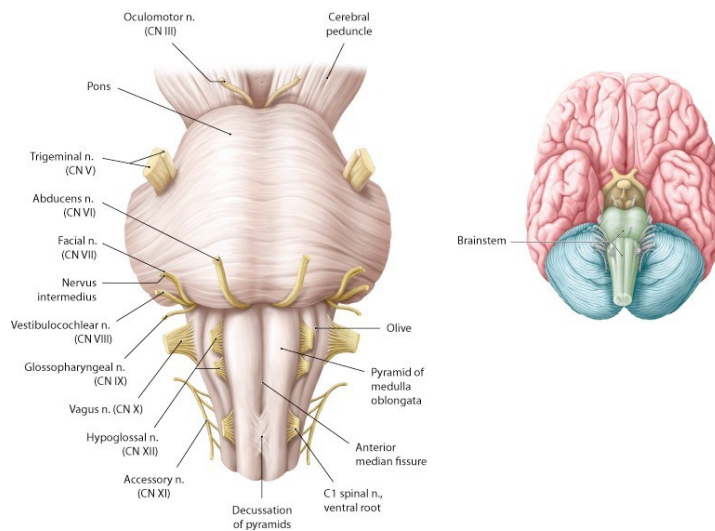


Figure 25.14. Adapted from Gilroy et al., Atlas of Anatomy, 2nd ed., Figs. 40.19b, 40.6b.

! After you're done with the brain, put it into the plastic Ziplock bag. Store the brain inside the body bag with your cadaver.

## INTERNAL BASE OF THE SKULL

### Bony Features

Study the bony features of the cranial base in a dried skull. Use a pipe cleaner to identify foramina and other passageways. Correlate the bony features in the skull with what you see in the cranial cavity of your cadaver.

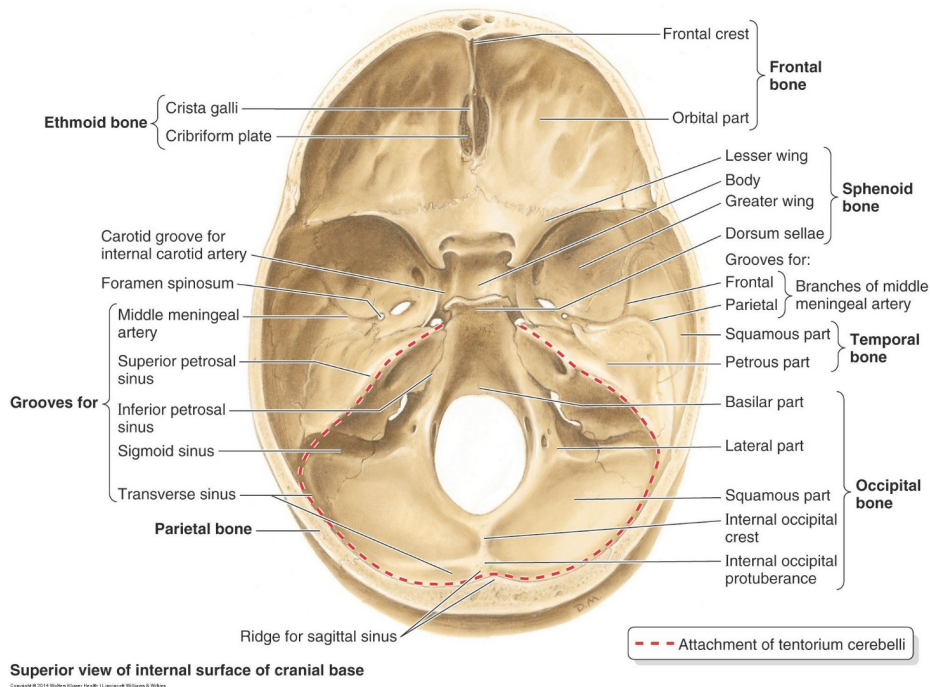


Figure 25.15. Clinically Oriented Anatomy, Figure 7.30.

Identify the following parts of the skull in the base of the skull:

- **Anterior cranial fossa**
  - **Orbital plates of frontal bone**
  - **Cribriform plate of ethmoid bone** (CN I pass through the **cribriform foramina**)
  - **Lesser wings** of sphenoid bone
  - **Anterior clinoid processes** of sphenoid bone
  - **Crista galli** of ethmoid bone
  - Contents of anterior cranial fossa: frontal lobes of brain, olfactory bulbs, olfactory tracts
- **Middle cranial fossa**
  - **Greater wings** of sphenoid bone
  - Squamous and petrous parts of temporal bones
  - **Optic canals** (contain CN II, ophthalmic artery)
  - **Superior orbital fissures** (contain CN IV, III, VI, V<sub>1</sub>)

- Foramina in middle cranial fossa: **foramen rotundum** (transmits V<sub>2</sub>), **foramen ovale** (transmits V<sub>3</sub>), **spinosum** (transmits middle meningeal artery), and **foramen lacerum** (transmits internal carotid artery)
- **Sella turcica** and its named parts: **hypophysial fossa** and **dorsum sellae**
- **Posterior clinoid processes** of sphenoid
- Grooves for middle meningeal arteries
- Contents of middle cranial fossa: temporal lobes of brain and hypophysis (pituitary). The pituitary rests in the hypophysial fossa of the sella turcica.
- **Posterior cranial fossa**
  - **Clivus** (made from sphenoid and occipital bones)
  - **Internal acoustic meatus** (transmits CN VII, VIII)
  - **Jugular foramina** (transmits CN IX, X, XI; internal jugular vein)
  - **Foramen magnum** (contains spinal cord, CN XI, vertebral arteries)
  - **Hypoglossal canals** (transmits CN XII)
  - Grooves for transverse, and sigmoid sinuses
  - Contents of posterior cranial fossa: midbrain, pons, medulla oblongata, cerebellum, occipital lobes of brain



In the skull base of your cadaver, can you locate the stumps of all the cranial nerves (I to XII) anterior to posterior? Name their foramina, too!

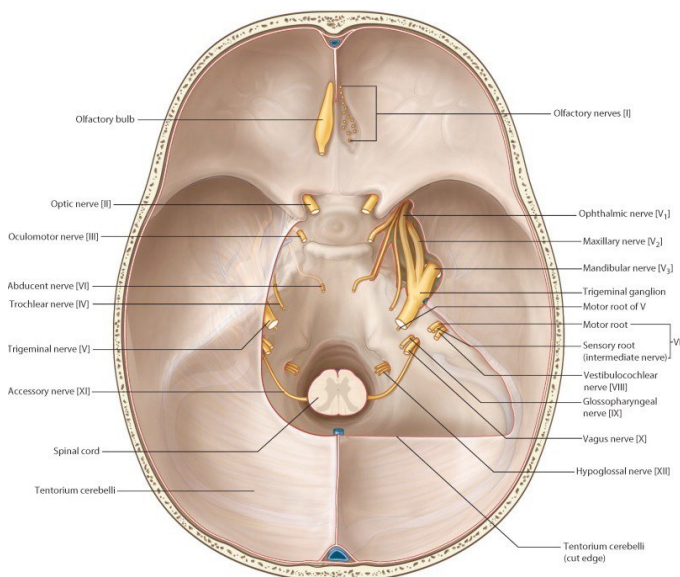


Figure 25.16. Gray's Atlas of Anatomy.

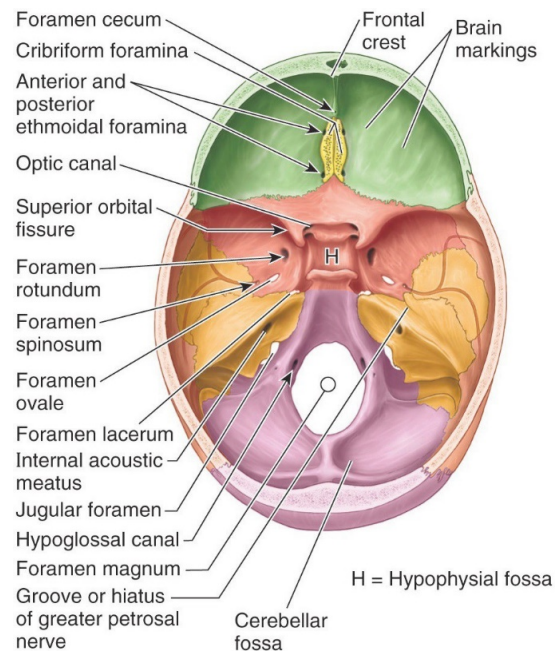


Figure 25.17. Clinically Oriented Anatomy, Figure 7.11.

## Dural Venous Sinuses

Locate and name the **dural venous sinuses**. See Figure 25.18. These are comparable to veins (except they have no middle layer of smooth muscle in their walls) and are created between the meningeal and endosteal layers of the dura.

Examine the skull base in your cadaver and the models:

- **Superior sagittal sinus:** in upper margin of falx cerebri
- **Inferior sagittal sinus:** in lower margin of falx cerebri above corpus callosum
- **Sigmoid sinus:** formed by union of inferior sagittal sinus (and great cerebral vein)

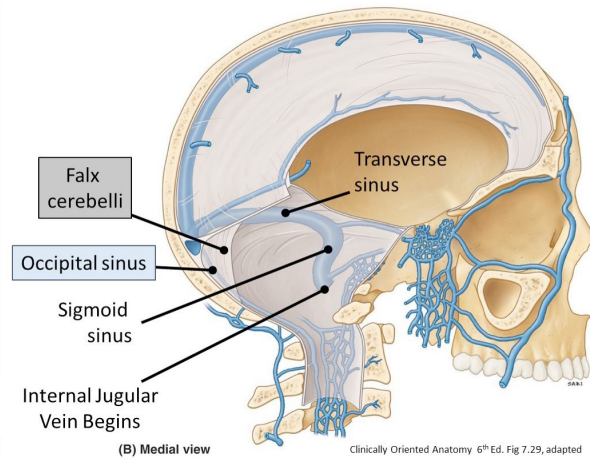


Figure 25.18.

- **Confluence of sinuses**
- R & L **transverse sinuses:** along margins of tentorium cerebelli
- R & L **sigmoid sinuses:** direct continuations of the transverse sinuses; terminate at jugular foramina
- R & L **superior petrosal sinuses:** run along summits of petrous ridge
- R & L **cavernous sinuses:** in the middle cranial fossa, just lateral to the sella turcica

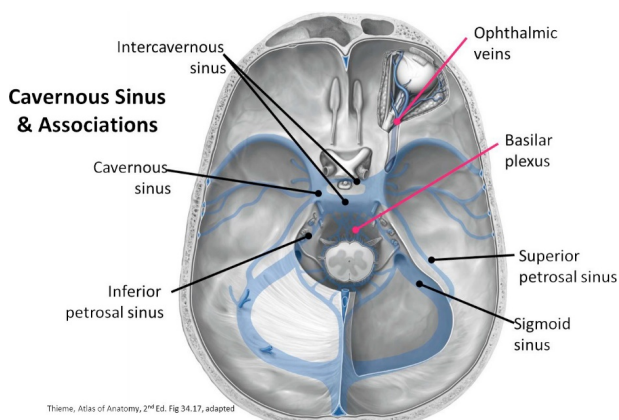


Figure 25.19.

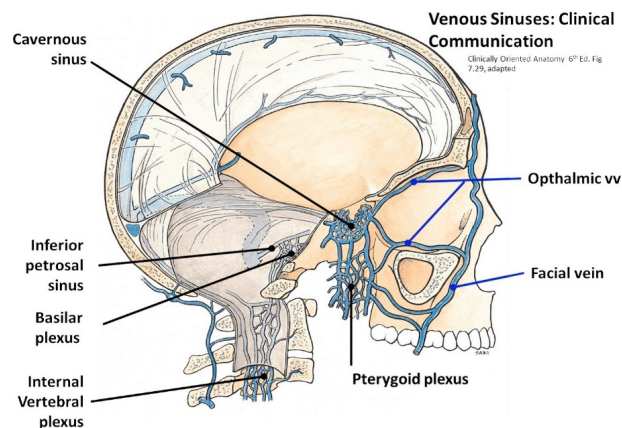


Figure 25.20.



Note that a donut-shaped band of dura overlies the hypophysial fossa in the sella turcica—the hole in the donut transmits the infundibulum (stalk in the pituitary).  
Where is the pituitary gland?

## Trigeminal Nerve

Identify the stump of the **trigeminal nerve** as it passes over the petrous ridge of the temporal bone. Pass a probe next to the nerve and advance it forward to demonstrate the pocket of dura that surrounds the nerve = this is called the **trigeminal (Meckel's) cave**. This outpocketing of dura surrounds CN V and the **trigeminal ganglion**.



**ATTEMPT TO STRIP THE DURA FROM THE FLOOR OF THE MIDDLE CRANIAL FOSSA ON ONE SIDE OF THE CRANIAL CAVITY.**



### Note

Use forceps or a curved clamp to grasp the dura. It's a tough mother!

- Strip the dura from one side to identify the **middle meningeal artery** and to observe **V<sub>1</sub>** (ophthalmic division), **V<sub>2</sub>** (maxillary division), and **V<sub>3</sub>** (mandibular division) branching from the **trigeminal ganglion**
- Trace **V<sub>1</sub>** along the lateral wall of the cavernous sinus into the **superior orbital fissure**.
- Trace **V<sub>2</sub>** into **foramen rotundum**.
- Trace **V<sub>3</sub>** into **foramen ovale**.

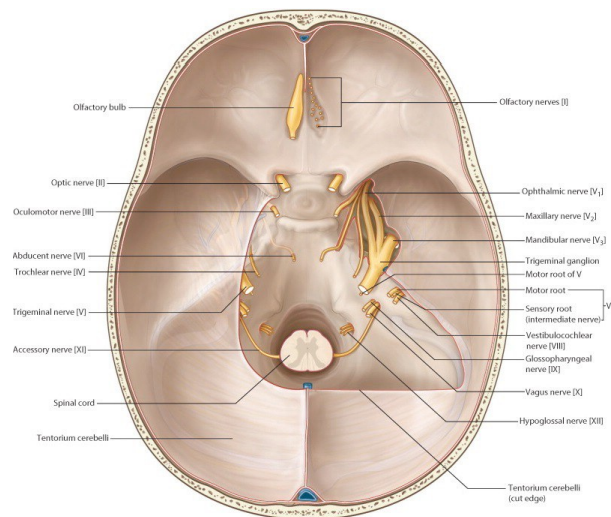


Figure 25.21. Gray's Atlas of Anatomy.

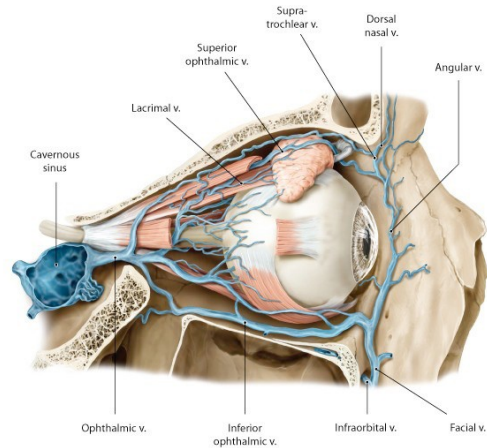
# Cavernous Sinuses



## OPEN ONE OF THE CAVERNOUS SINUSES.

Trace the oculomotor nerve (CN III) forward and note that it lies in the lateral wall of the cavernous sinus.

What other structures lie within the cavernous sinus and its walls?  
See Figure 25.23.



**Note that the Internal carotid artery passes through the center of the sinus. Contemplate this: arterial blood in the ICA is bathed in venous blood. Crazy!**

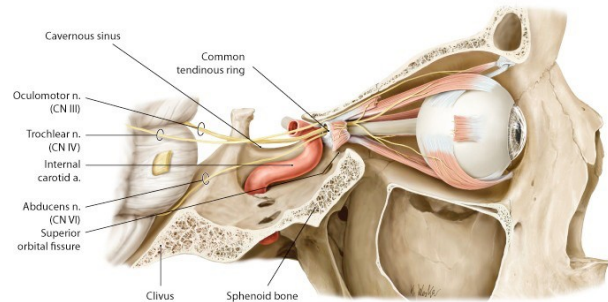


Figure 25.22. Adapted from Gilroy et al., Atlas of Anatomy, 2nd ed., Figs. 35.6, 35.5.

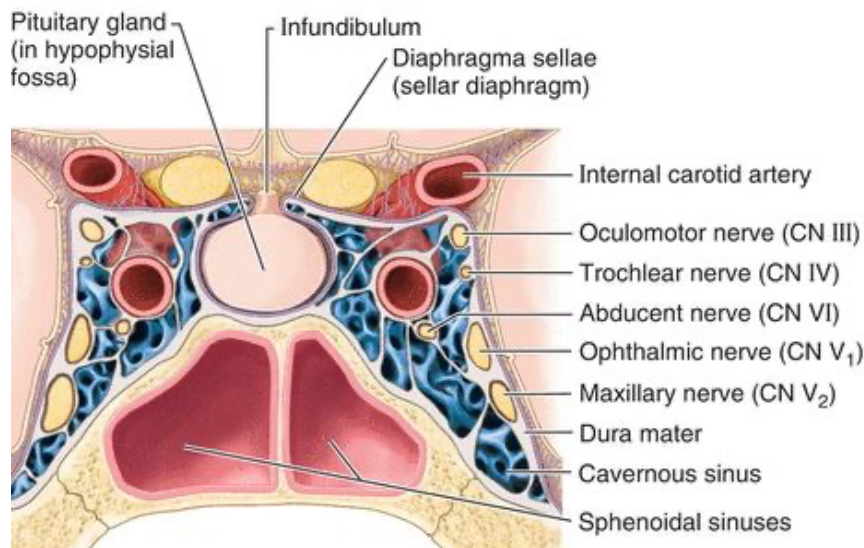


Figure 25.23. Posterior view of coronal section of cavernous sinus.

## CHECKLIST, LAB #25

REVIEW AND MAKE SURE YOU HAVE IDENTIFIED EACH OF THE STRUCTURES BELOW.

### SCALP

- Skin
- Connective tissue (superficial fascia)
- Epicranial aponeurosis
- Loose areolar CT layer
- Pericranium

### CRANIAL CAVITY/CRANIAL BASE

- Dura mater
- Falx cerebri
- Falx cerebelli
- Tentorium cerebelli
- Tentorial notch
- Anterior cranial fossa
- Crista galli
- Middle cranial fossa
- Trigeminal (Meckel's) cave
- Petrous part of temporal bone
- Infundibulum of hypophysis
- Hypophysis (pituitary gland)
- Optic nerve (CN II)

- Oculomotor nerve (CN III)
- Trochlear nerve (CN IV)
- Trigeminal nerve (CN V)
- Ophthalmic nerve (V1)
- Maxillary nerve (V2)
- Mandibular nerve (V3)
- Abducens nerve (CN VI)
- Internal carotid artery
- Posterior cranial fossa
- Clivus
- Facial nerve (CN VII)
- Vestibulocochlear nerve (CN VIII)
- Glossopharyngeal nerve (CN IX)
- Vagus nerve (CN X)
- Spinal accessory nerve (CN XI)
- Hypoglossal nerve (CN XII)
- Vertebral arteries
- Dural Venous Sinuses—identify in cadaver and models
- Superior sagittal
- Straight sinus
- Confluence of sinuses
- Transverse sinuses
- Sigmoid sinuses

Superior petrosal sinuses

Cavernous sinuses

## BRAIN

Arachnoid mater

Arachnoid granulations

Pia mater

Brainstem: medulla, pons, and midbrain

Cerebellum

Olfactory bulb and tracts

Optic tracts, optic chiasma, and optic nerves

Basilar artery

Posterior cerebral arteries

Posterior communicating arteries

Anterior cerebral arteries

Anterior communicating artery

## SKULL: BONES OF CRANIAL VAULT

Frontal

Ethmoid

Sphenoid

Temporal

Occipital

Parietal

Coronal suture

- Sagittal suture
- Lambdoidal suture
- Squamous suture

## SKULL: SKULL BASE

- Cribriform plate with Olfactory (cribriform) foramina
- Crista galli
- Optic canals
- Anterior and posterior clinoid processes
- Greater and lesser wings of sphenoid bone
- Superior orbital fissures
- Sella turcica: Includes the hypophysial fossa + dorsum sellae
- Foramen rotundum
- Foramen ovale
- Foramen spinosum
- Foramen lacerum
- Groove for middle meningeal artery
- Clivus
- Internal acoustic meatuses
- Jugular foramina
- Hypoglossal canals
- Grooves for transverse sinuses and sigmoid sinuses